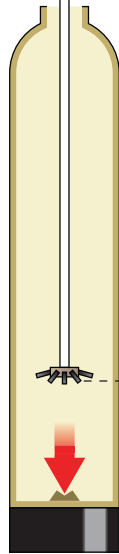


WHOLE HOUSE 2815 BACKWASHING CARBON FILTER INSTALLATION

FW-2815BW-S2-5CC, FW-2815BW-S2-7CC & FW-2815BW-S2-9CC

1. Media Loading Instructions

Riser Tube

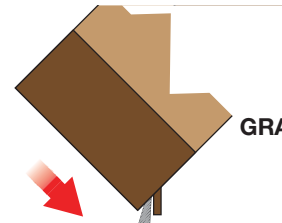


Resin Tank

1

The riser tube should be centered in the bottom of the tank. There is a divet in the bottom of the tank that the hub and laterals on the end of the riser tube will fit in. The top of the riser tube should be flush with the very top of the tank.

Hub and Laterals



GRAVEL MEDIA

Funnel

2

Use a piece of tape to cover the riser tube while adding media to the tank. You do not want any media getting into the riser tube. Place the funnel in opening at the top of the tank. Pour media into the tank using the funnel.

Fill to here



GRANULAR ACTIVATED CARBON

Funnel

12-18" of free space
Fill to here

3

Fill the tank with granular activated carbon media. After filled, remove the funnel and tape covering the opening of the riser tube. Clean up the riser, tank threads and top of the tank before installing the control valve.



Control Valve

4

Thread the control valve on to the top of the tank. The control should thread on easily. If you feel any abnormal resistance, check to make sure the control is not cross threaded.

The system is now assembled and ready for installation.

2. Valve Plumbing Diagram



It is recommended to construct a bypass loop around the filter and to use mechanical unions on all three plumbing connections to make future servicing easy. These fittings are not supplied with the system.

3. Plumbing Connection & Startup

1. Connect the plumbing to the control valve in accordance with the diagram above. **NOTE:** It is recommended to construct a bypass loop around the filter and to use mechanical unions on all three plumbing connections to make future servicing easy. These fittings are not supplied with the system.
2. If a bypass has been installed, place the valves in the bypass position. Turn on the water to the system and check all connections for leaks.
3. Initiate a backwash/regeneration cycle on the control valve by pressing and holding the button with diamond shape.
4. Once the display indicates that the control valve is in backwash mode, open the bypass handles and allow the tank to fill with water. Note: It is very important that the valve is in the backwash mode before allowing the tank to fill with water. This ensures that the air inside the tank has a pathway out as the tank fills with water.
5. Allow the system to complete the entire backwash/regeneration cycles on its own.
6. Place the system back into bypass by turning the red bypass knobs into the correct position. Allow the system to stay in bypass for 24 hours to condition the activated carbon.
7. After 24 hours, place the bypass knobs to the service position and initiate the backwash/regeneration cycle. Your system is ready to use once the cycle is complete.

***Note:** It is normal to see very small air bubbles in the water when new activated carbon filters are installed. These tiny bubbles can give the water a greyish cast. However, they do quickly dissipate in a clear glass. These bubbles will go away once the system becomes thoroughly saturated. This could take several days depending upon water usage.